





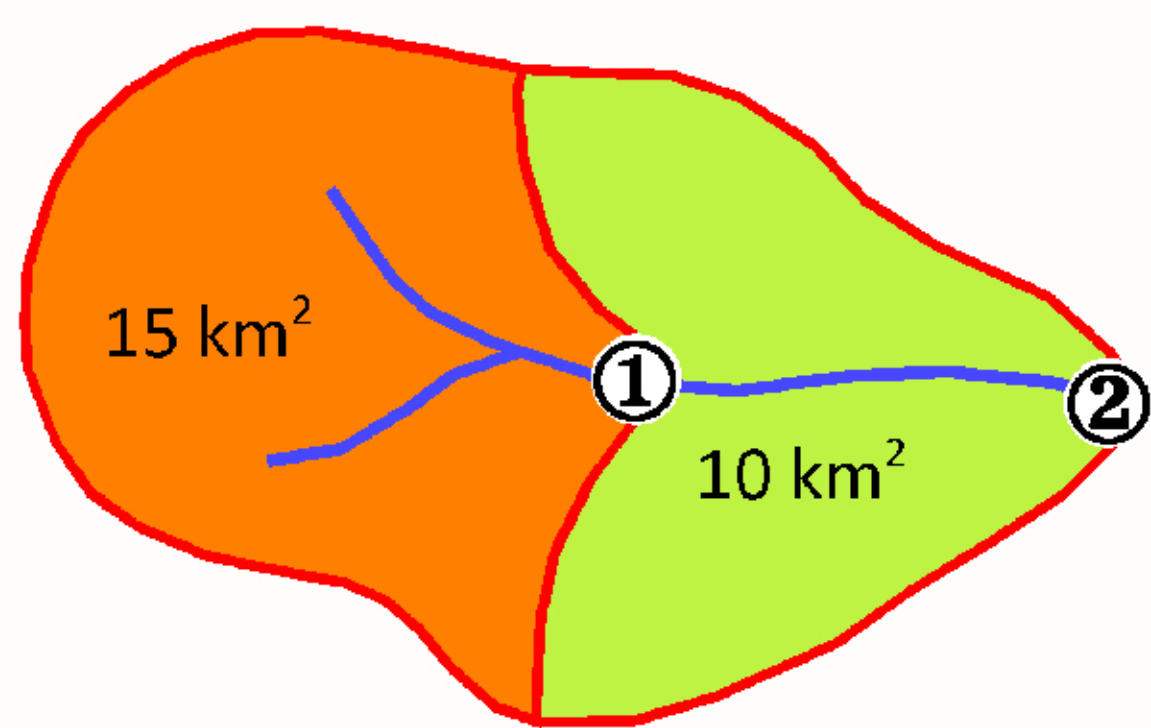
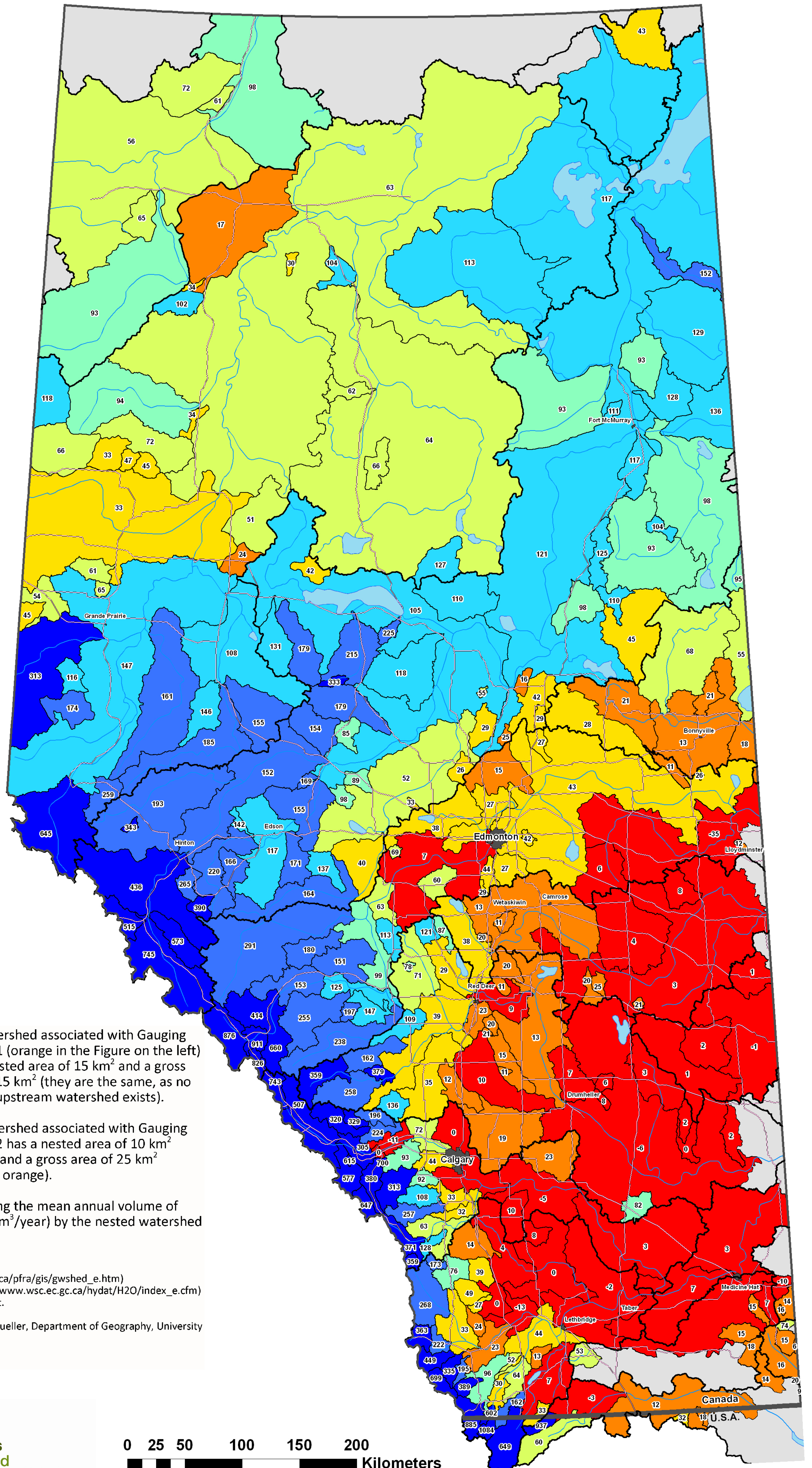
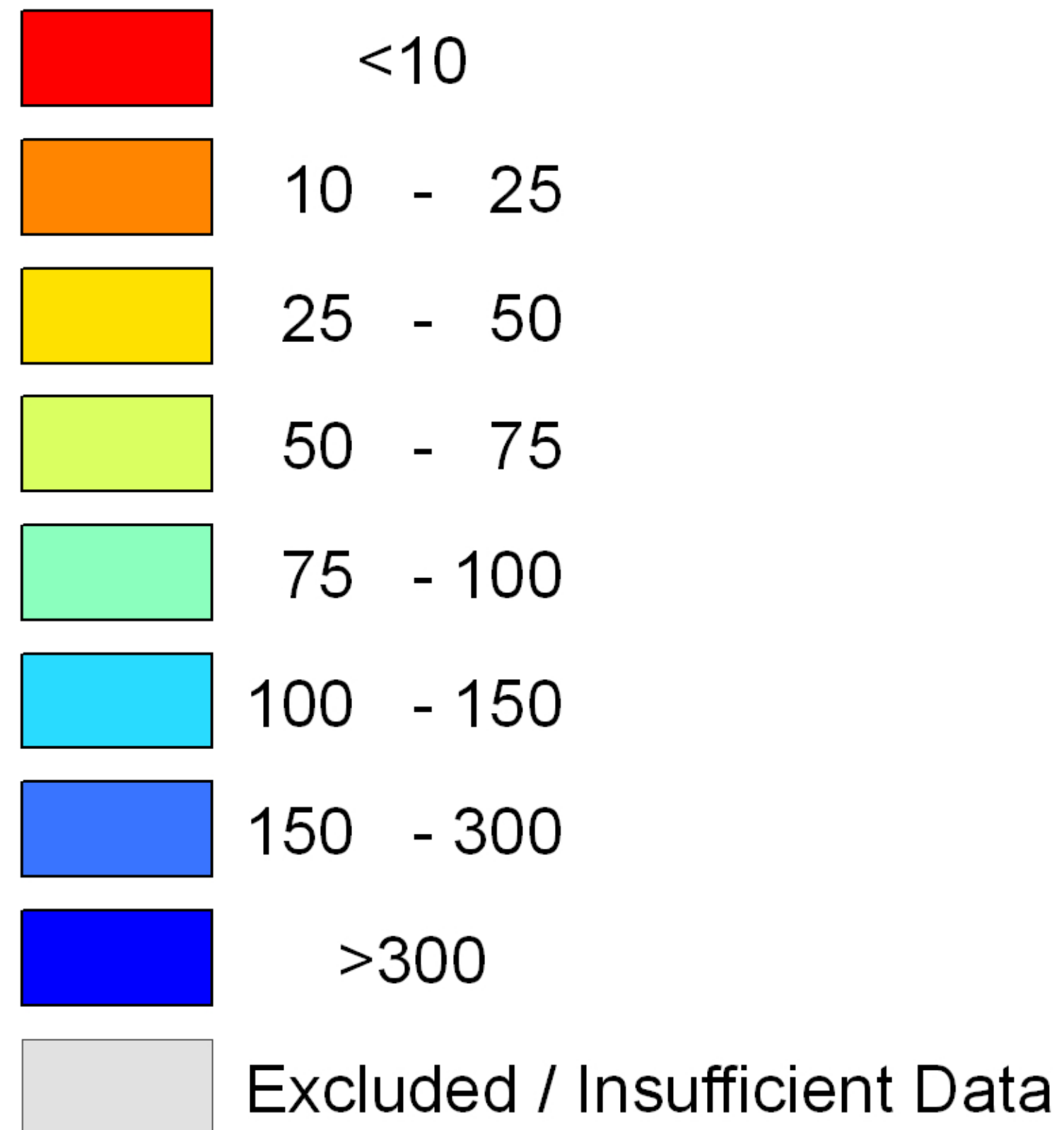


Alberta Water Yield Per Square Kilometer

-  Greater Alberta Watersheds
-  Alberta Border
-  Lakes
-  Cities
-  Major Roads
-  Rivers

Water Yield ($m^3/km^2/yr$) x1000



The watershed associated with Gauging Station 1 (orange in the Figure on the left) has a nested area of 15 km^2 and a gross area of 15 km^2 (they are the same, as no further upstream watershed exists).

The watershed associated with Gauging Station 2 has a nested area of 10 km^2 (green), and a gross area of 25 km^2 (green + orange).

The specific water yield was calculated by dividing the mean annual volume of streamflow produced in a nested watershed (in $m^3/year$) by the nested watershed area (in km^2).

Data sources:
 - Watershed boundaries provided by PFRA (http://www.agr.gc.ca/pfra/gis/gwshed_e.htm)
 - Streamflow data provided by Water Survey of Canada (http://www.wsc.ec.gc.ca/hydat/H2O/index_e.cfm)
 - Naturalized streamflow data provided by Alberta Environment.

This map was produced by Dr. Stefan W. Kienzie and Markus Mueller, Department of Geography, University of Lethbridge (August 2010).

Enquiries: stefan.kienzie@uleth.ca

